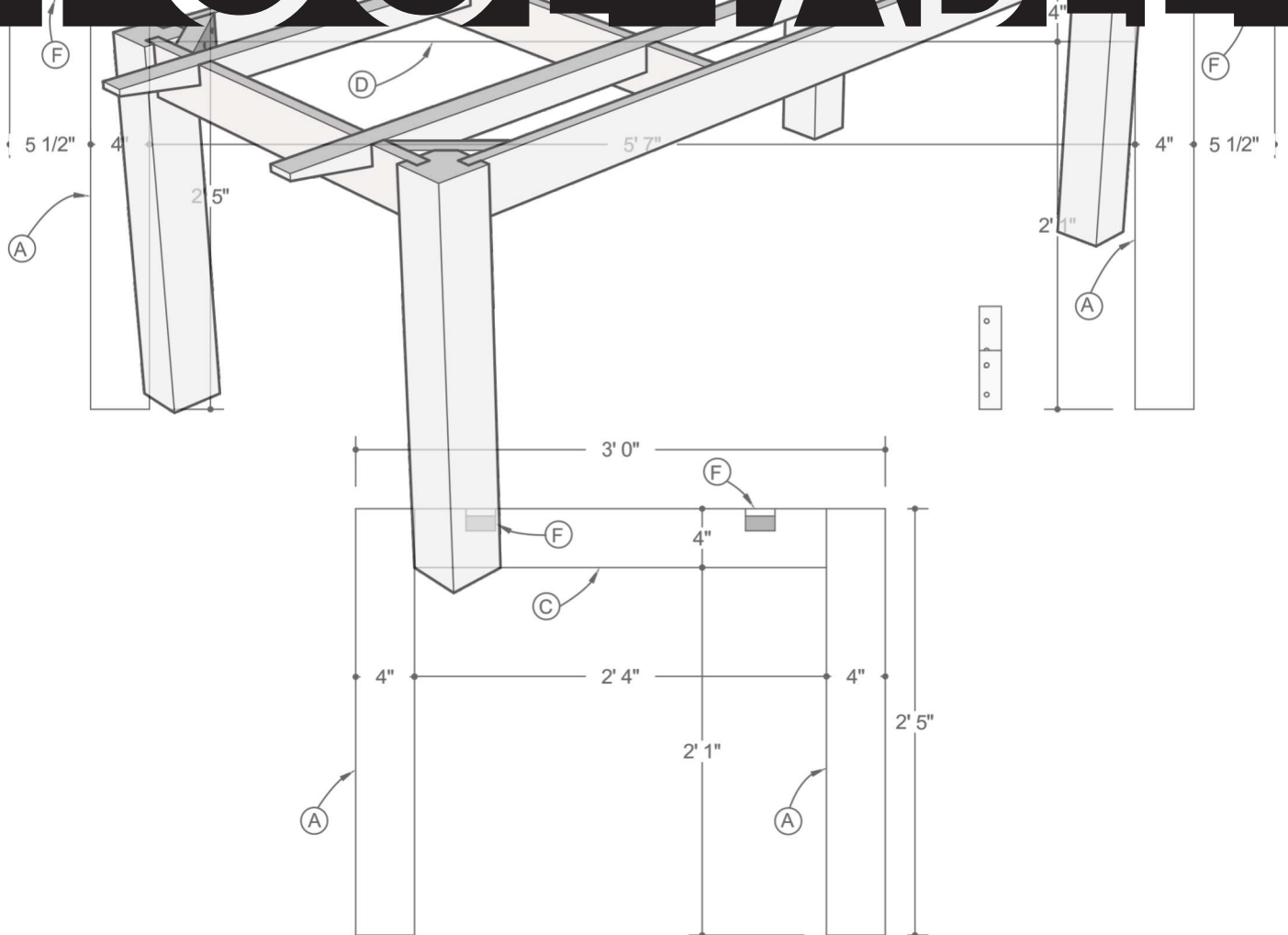


how to build a

# POOL TABLE



how to build a

# POOL TABLE

Copyright © 2017 by Aristidis Tonikidis

All rights reserved. No part of this book may be reproduced in any form or by any electronic or mechanical means, without permission in writing from the copyright owner.

**Please note:** Working wood is inherently dangerous. Using hand or power tools improperly or ignoring safety practices can lead to permanent injury or even death. Don't try to perform operations unless you are certain they are safe for you. If something about an operation doesn't feel right, look for another way or ask for assistance. We want you to enjoy your time in the woodshop, so please keep safety foremost in your mind whenever you're in the shop. Although every effort has been made to provide the best possible information in this book, the author is not responsible for accidents, injuries, or damage incurred as a result of tasks undertaken by readers. This book is not a substitute for professional services.



Eleven years have already gone by! Unbelievable! It was in autumn of 2006 when I first came up with the idea to gather all the plans that I had already created in order to build my pool table and make them available in a book form along with some instructions that arose from my experience during the construction.

Many things have changed during these eleven years. We have changed. Our experience, aesthetics and the knowledge have changed too. Going back to the original book, I don't get the pride that I felt when I saw it finished. I no longer feel the same pride for the plans, for the images, for the legibility, even for the font. It seems now so far and distant from my current assumption that really bothers me because it appears incomplete. I had to refresh it according to my new data. I refreshed it!

What have I done? Firstly I changed the plans into a more readable form and I also included 3D drawings of every component of the structure but also of the final result. I also created new plans for the construction of the table's base and a series of images that describe expressively every step of the assembly in a extremely simple way! Furthermore I considered that the details that derive from the plans make the description of the way of working for the construction of every component almost useless. Only the way of installing the felt on the surface and the side rail is described. Just that!

Of course not everything has changed: The dimensions of the inner surface of the game comply with the specifications of a 7' table. The height, the opening of the pockets and the slope of the rubber are designed according to the specifications. These are the parts in which I shifted my attention so that the final result is as it is supposed to be in order not to differ from the current reality.

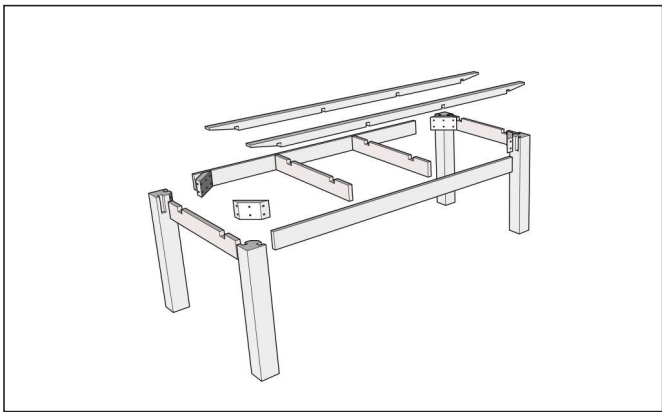
This is the new book that will show you how to build your pool table. I hope that it will help you accomplish your goal and that you will enjoy the whole process. Even the difficulties that you may encounter during that process are an integral part of the construction that contribute to the acquisition of experience, knowledge and .... patience. Remember that what matters is the journey and not the final destination. A Greek poet, Konstantinos Kavafis, in 1910 wrote in his poem Ithaca about the significance of the journey towards the accomplishment of a goal. Are you interested in reading it?

“

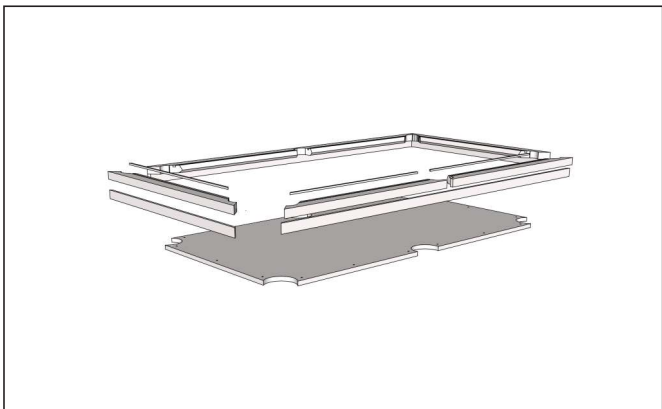
*As you set out for Ithaka  
hope the voyage is a long one,  
full of adventure, full of discovery.  
Laistrygonians and Cyclops,  
angry Poseidon—don't be afraid of them:  
you'll never find things like that on your way  
as long as you keep your thoughts raised high,  
as long as a rare excitement  
stirs your spirit and your body.  
Laistrygonians and Cyclops,  
wild Poseidon—you won't encounter them  
unless you bring them along inside your soul,  
unless your soul sets them up in front of you.*

”

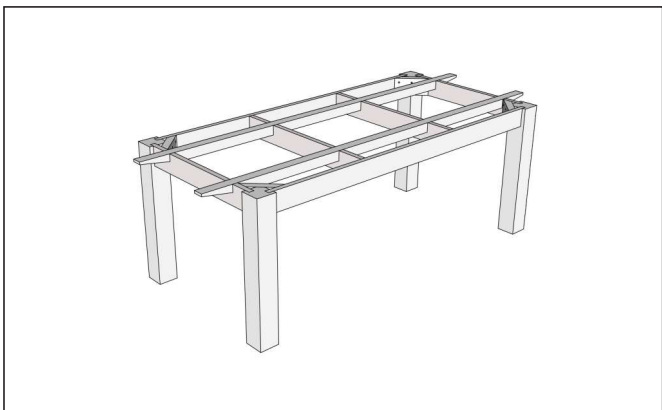
Aristidis Tonikidis



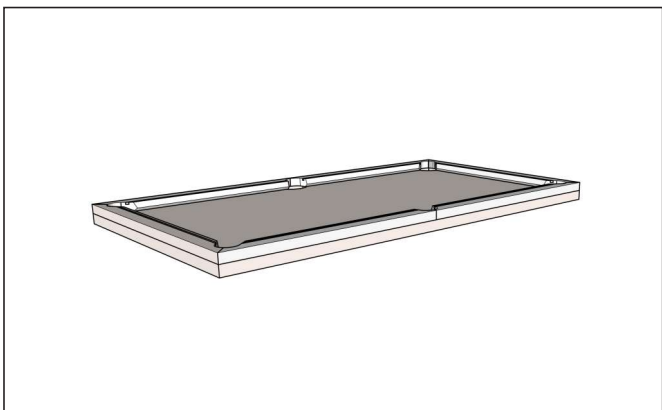
## BASE PLANS 06 - 10



## TABLETOP PLANS 11 - 17



## BASE ASSEMBLY 18 - 28



## TABLETOP ASSEMBLY 29 - 38



## FINAL ASSEMBLY 39 - 41



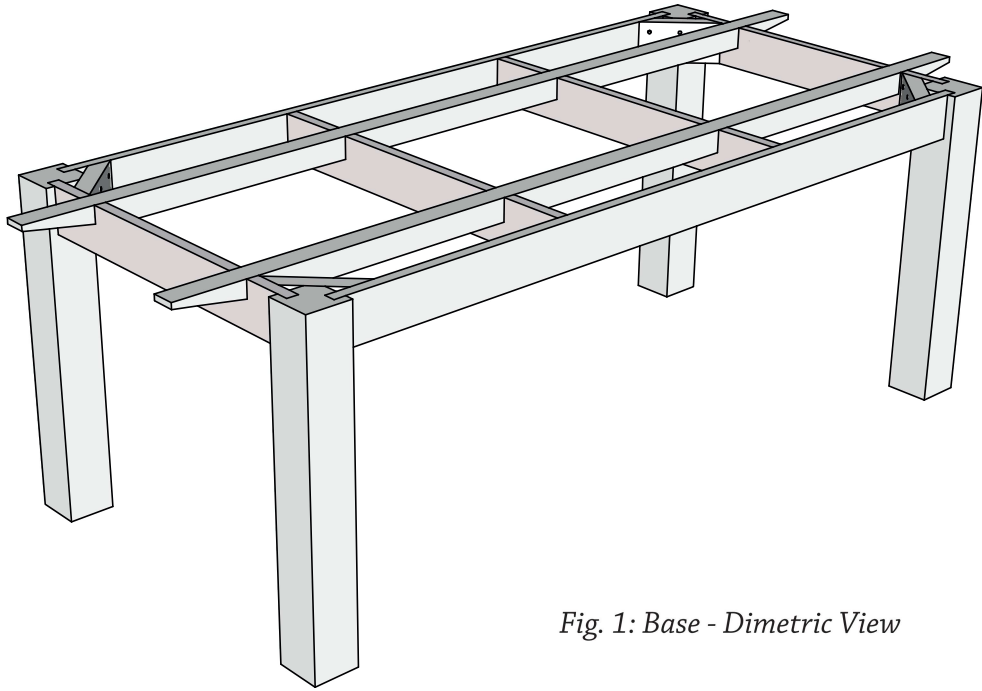


Fig. 1: Base - Dimetric View

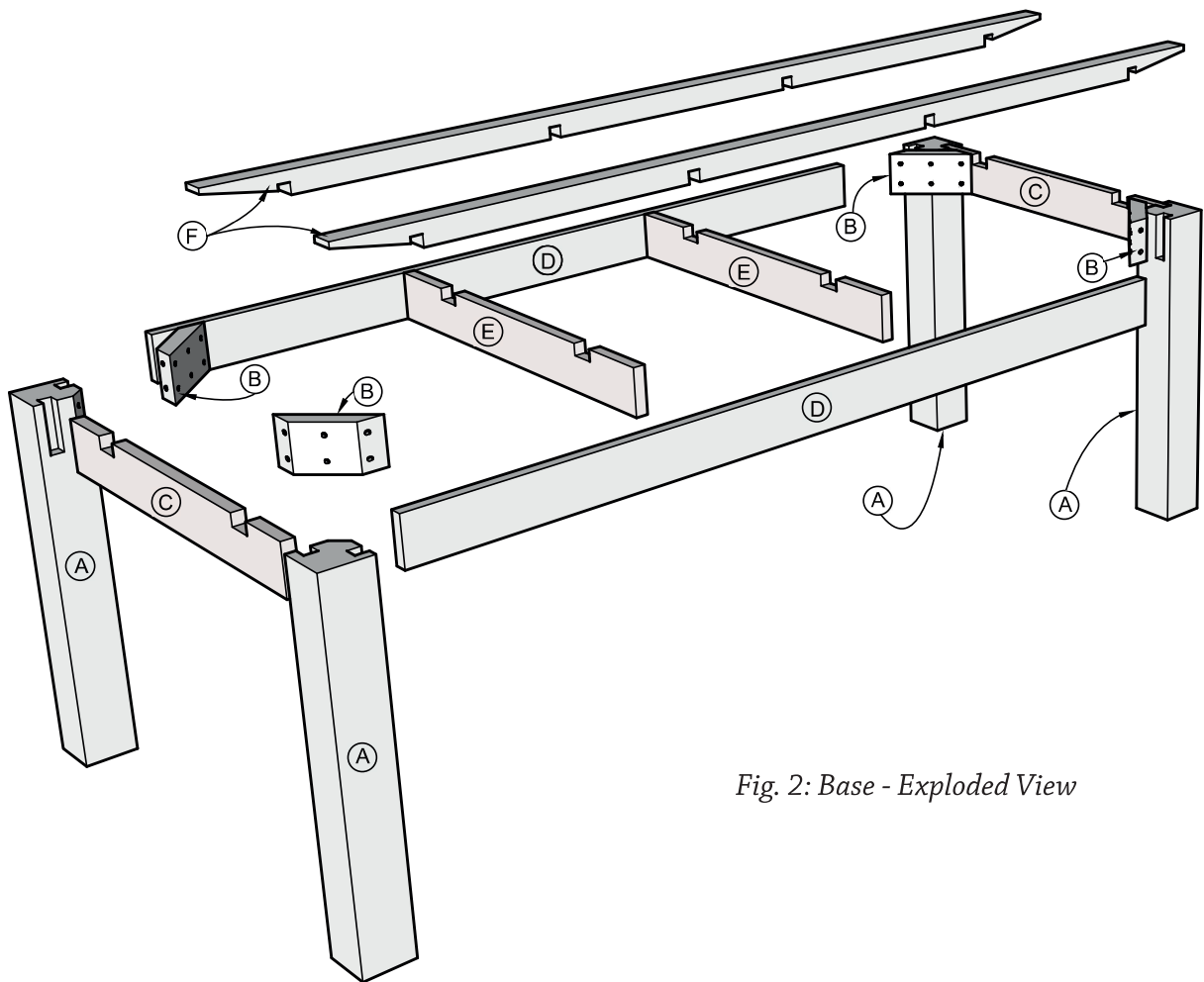


Fig. 2: Base - Exploded View

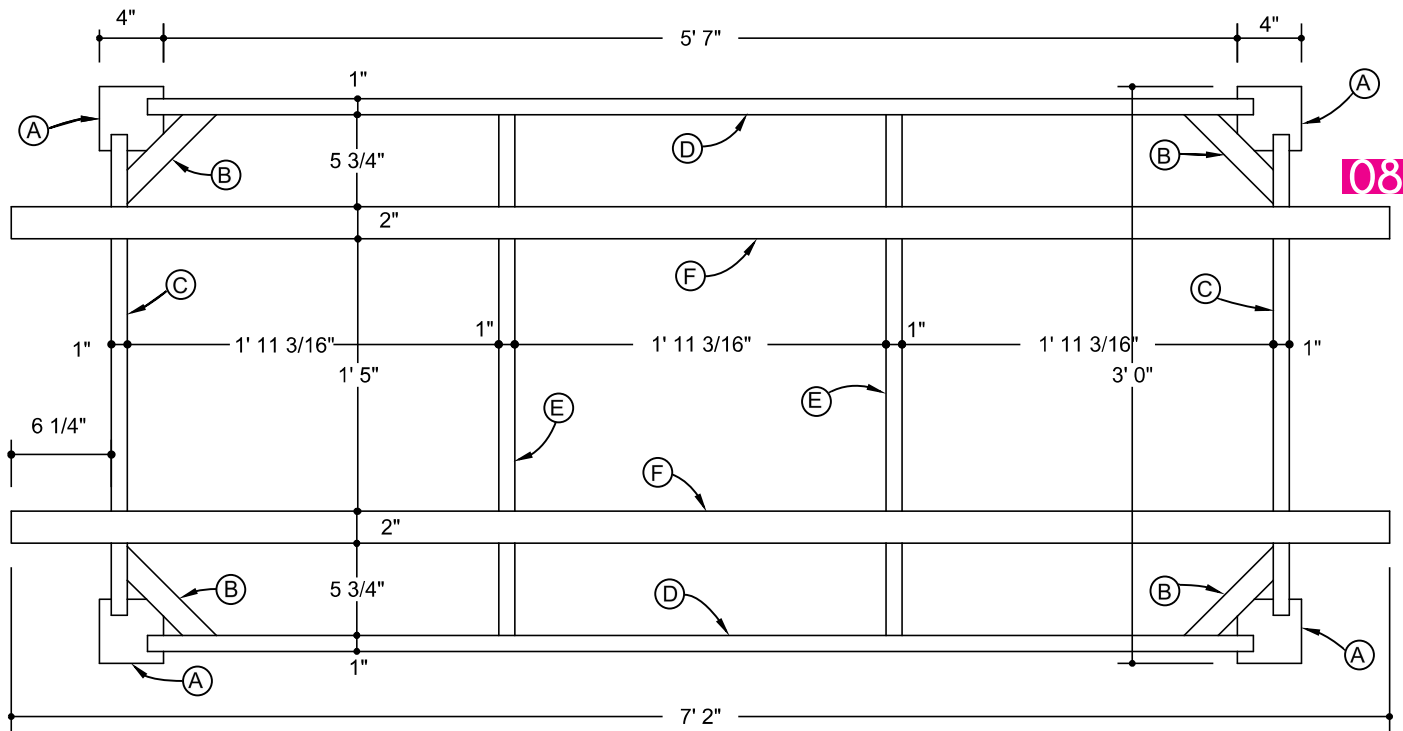


Fig. 3: Base - Top View

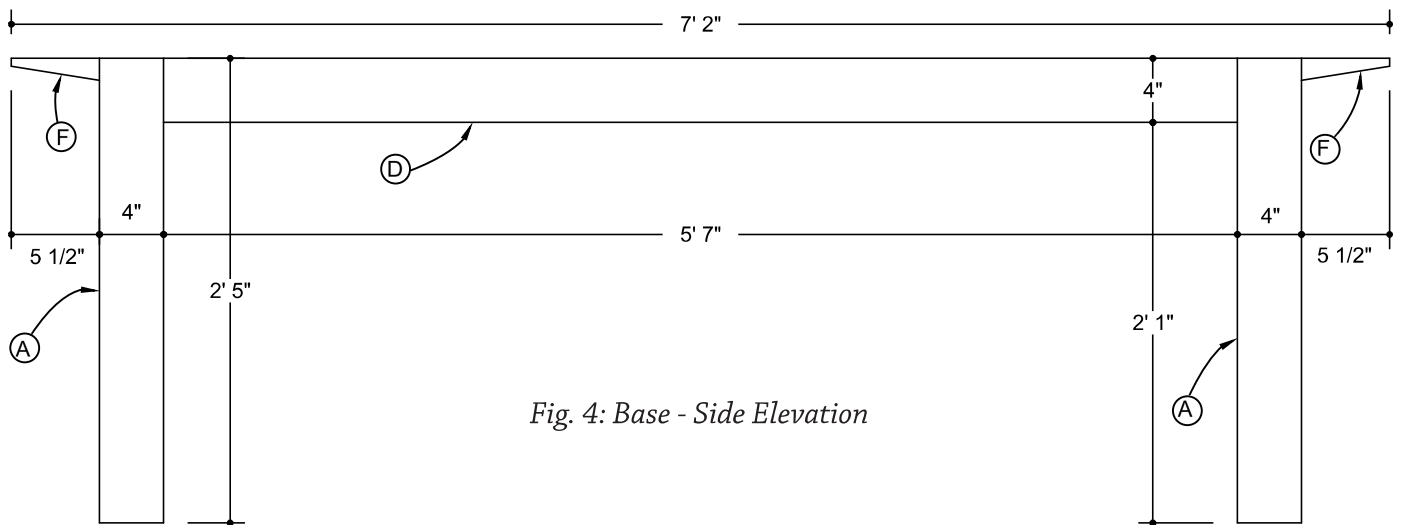


Fig. 4: Base - Side Elevation

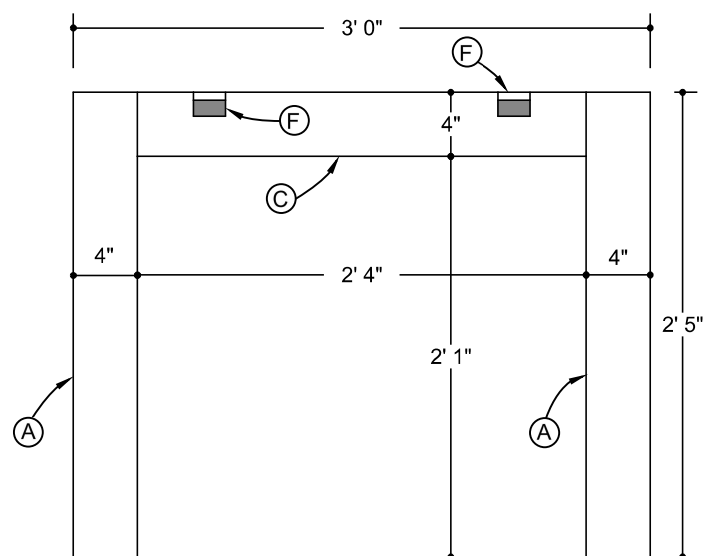


Fig. 5: Base - Front Elevation



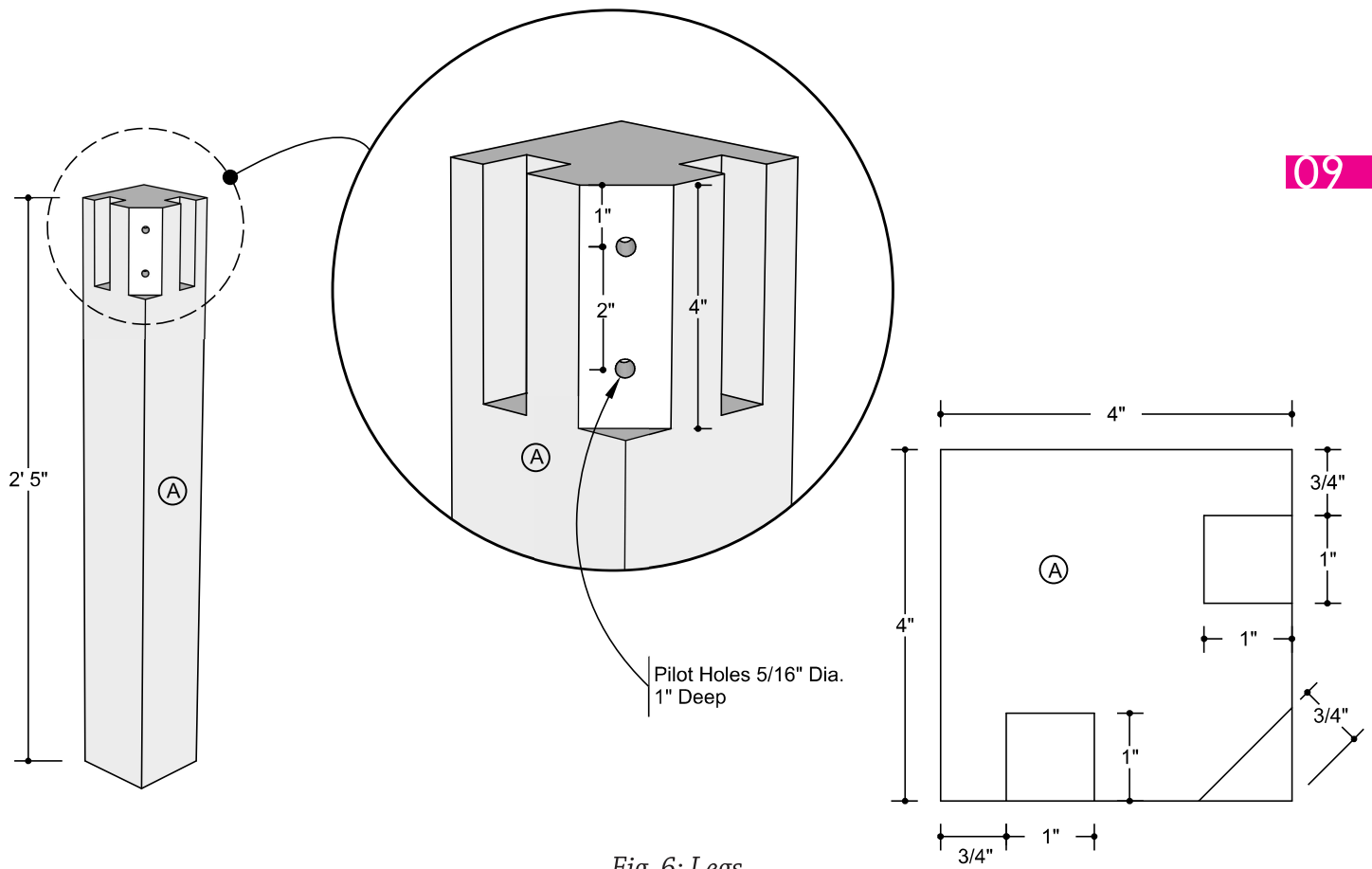


Fig. 6: Legs

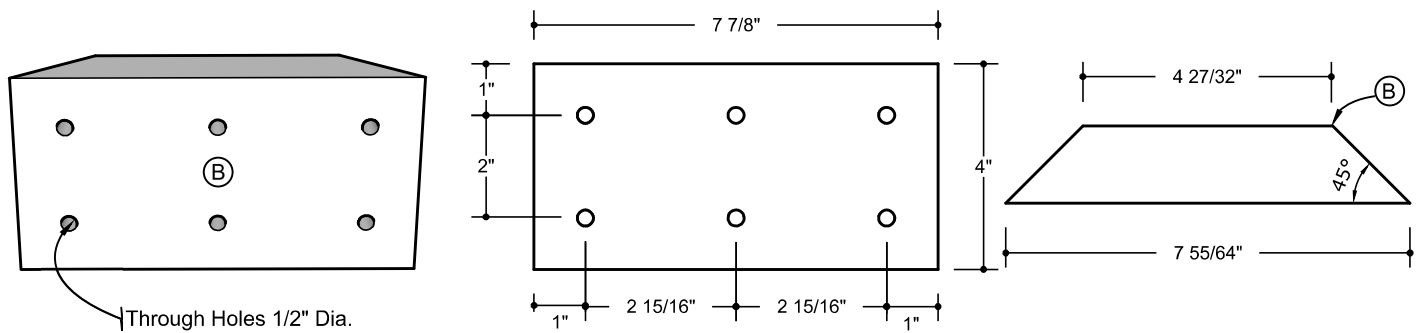


Fig. 7: Corner brackets

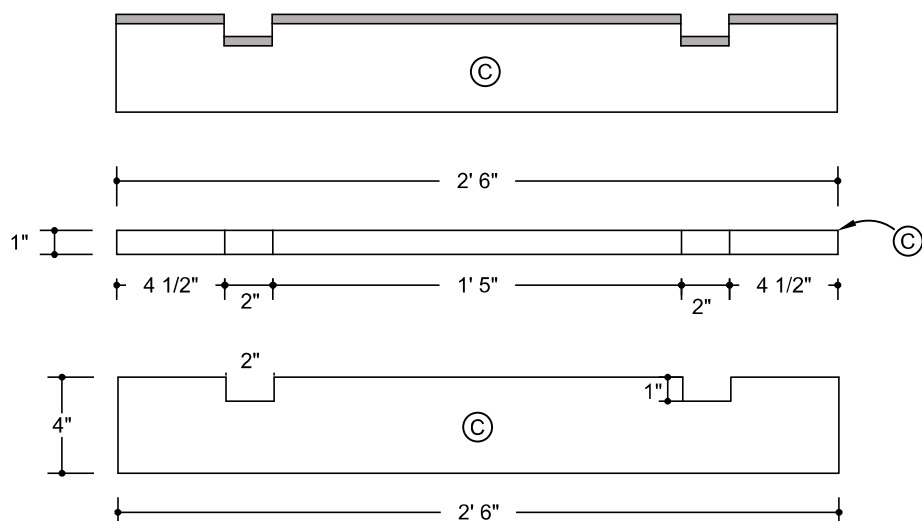


Fig. 8: End aprons

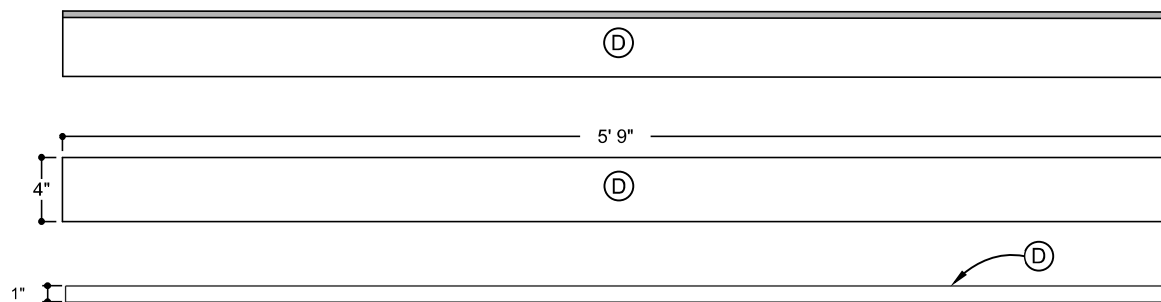


Fig. 9: Side aprons

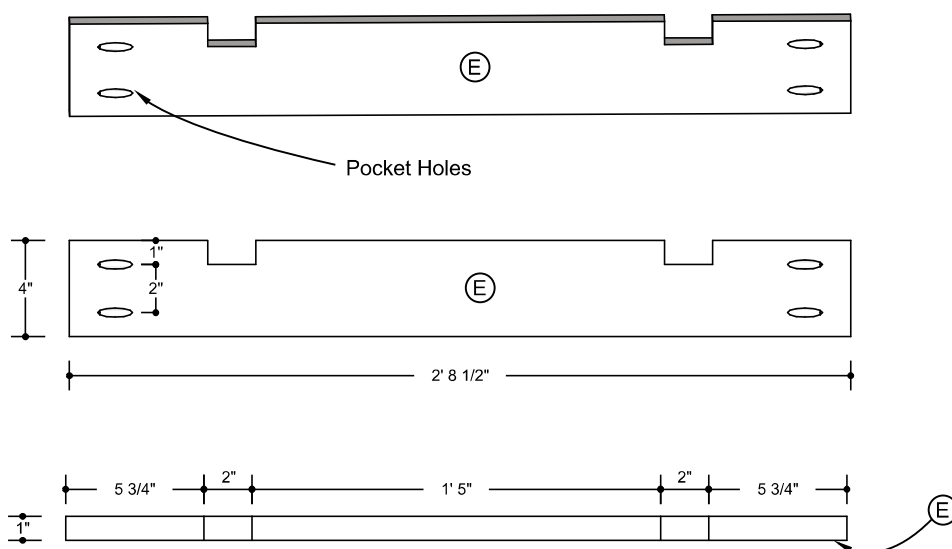


Fig. 10: Short interior frame support

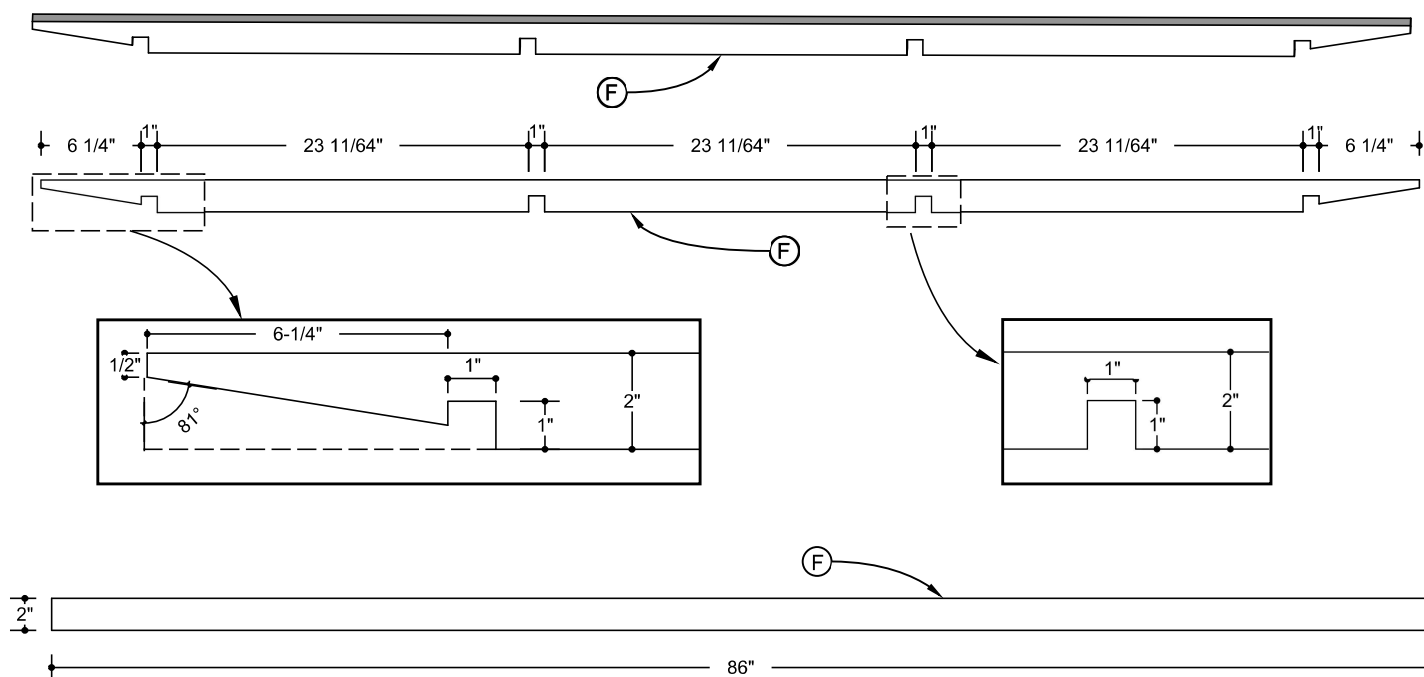
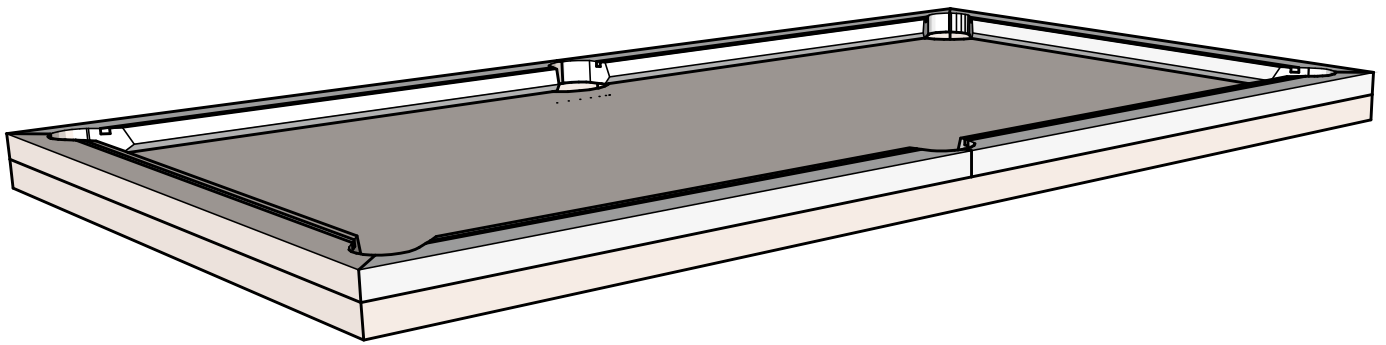
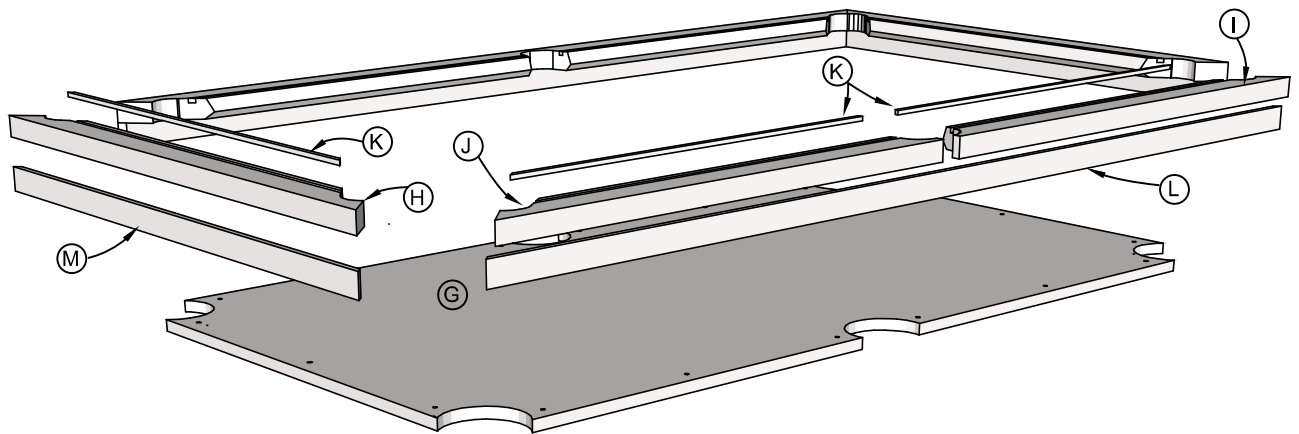


Fig. 11: Long interior frame support





*Fig. 12: Tabletop - Dimetric View*



*Fig. 13: Tabletop - Exploded View*